

**PLANT BIOLOGY GRADUATE  
PROGRAM  
THE UNIVERSITY OF TEXAS AT AUSTIN**



*"A Lonely and Wonderful Bloom" by Xingbo Cai*

**2023 – 2024  
GRADUATE STUDENT HANDBOOK  
Doctoral and Master's Program**

## Table of Contents

Welcome and Overview	3
Student Responsibilities	3
Graduate Program Administrative Structure	3
Graduate Student Representatives	4
Student Advising Resources	5
Student Program Development Milestones	6
Course Advisory and Mentoring Program	7
PB Annual Assessment	7
PhD Curriculum Requirements	8
Qualifying Exam	10
Advance to Candidacy	12
Dissertation Defense	13
Master of Arts Program	14
Registration	15
Outside Employment	16
Academic Appointments and University Fellowships	17
Prestigious Outside Fellowships	18
Department Fellowship Competition	19
Health Insurance Benefits	20
Required Student Training	20
Crisis Procedures	21
Scholastic Probation and Dismissal	23

---

## Welcome and Overview

---

We the faculty and staff of the Plant Biology Graduate Studies Committee wish to welcome you to the PB Graduate Program. We look forwards to working with you and supporting your progress towards a graduate degree in PB. We encourage you to actively use this handbook throughout your studies as it is a summary of the university, department and graduate program policies and procedures. For more complete information, please refer to our website <https://integrativebio.utexas.edu/plant-biology-graduate-program>.

---

## Student Responsibilities

---

You are responsible for understanding the rules and policies that govern your academic degree. Use all resources available to you and plan well in advance to meet necessary deadlines. Please feel free to ask our Graduate Program Administrator about any deadlines, or issues you may have questions about.

The Graduate School website <https://gradschool.utexas.edu/> is an excellent resource for information on degree requirements, as well as policies for applying to graduate and deadlines for thesis defenses and dissertation submissions. The Graduate School Handbook can be accessed at <https://catalog.utexas.edu/graduate/>

The College of Natural Sciences (CNS) website for Graduate Study is another great resource for graduate students (<https://cns.utexas.edu/academics/graduate-study>). This website covers college policies, graduate courses offered throughout all CNS graduate programs, professional development and career support options, Elective Specialty Areas (e.g., Science and Public Policy; Ethics and Social Responsibility; Concentration in Teaching and Mentoring; Concentration in Communicating Science; Data Analysis; Concentration in Leadership and Project Management), and additional Certificates that CNS students can complete in addition to their doctoral degree, such as Interdisciplinary Portfolio Options (e.g., [Scientific Computation](#); [Computational Medicine](#); or [Applied Statistical Modeling](#)).

This PB Graduate Handbook is regularly updated and revised; please consult always the most current version of this Handbook posted at the PB website listed above.

---

## Graduate Students Bill of Rights

---

The IB Graduate Students Bill of Rights clarifies what graduate students can expect from their advisor(s) and the Department of Integrative Biology (IB). This Bill of Rights applies to all graduate students who are advised or co-advised by a faculty member with an IB affiliation. The IB Graduate Students Bill of Rights clarifies department-level rights not directly specified in the Graduate Students Bill of Rights & Responsibilities passed by the UT Graduate Student Assembly in 2015. The IB Graduate Students Bill of Rights is posted here: <https://integrativebio.utexas.edu/academics/graduate-program-resources/ib-graduate-students-bill-of-rights>

---

## Graduate Program and IB Administrative Structure

---

### **The Graduate Studies Committee (GSC)**

The Graduate Studies Committee consists of faculty in the Departments of Integrative Biology and Molecular Biological Sciences, as well as faculty from other departments whose interests overlap substantially with the PB GSC. The GSC sets the policies concerning the graduate program curriculum and academic requirements within the guidelines of the Graduate School and the College of Natural Sciences.

### **Associate Chair for Graduate Education, IB (Dr. Kelly Zamudio, [kelly.zamudio@austin.utexas.edu](mailto:kelly.zamudio@austin.utexas.edu))**

The Associate Chair for IB Graduate Programs administers overarching goals pertaining to the education and support of EEB-, PB- and IB-affiliated students (students in IB labs, but not in the EEB or PB graduate programs) and is the liaison between these programs and the College of Natural Sciences.

### **PB GSC Chair (Dr. Tom Juenger, [tjuenger@austin.utexas.edu](mailto:tjuenger@austin.utexas.edu))**

The PB GSC Chair is a faculty member who oversees PB-GSC policies and PB-GSC meetings, and serves as liaison to the Graduate School and the College of Natural Sciences.

### **PB Graduate Advisor (Dr. Enamul Huq, [huq@austin.utexas.edu](mailto:huq@austin.utexas.edu))**

The Graduate Advisor is a faculty member of the PB GSC who advises graduate students, monitors their progress towards their degree, and serves as a liaison to the Graduate School and the College of Natural Sciences.

### **Graduate Program Administrators (Tamra Rogers, [tamrabrogers@utexas.edu](mailto:tamrabrogers@utexas.edu); Susan Stanford, [susan.stanford@austin.utexas.edu](mailto:susan.stanford@austin.utexas.edu))**

The Graduate Program Administrators maintain student records, process, and monitor student funding, and ensure forms and procedures are processed in a correct and timely manner. Questions concerning procedures should be addressed with one of our Graduate Administrators who will consult with the Graduate Advisor, Associate Chair for Graduate Programs, The College of Natural Sciences, or the Graduate School, as necessary.

### **PB Graduate Program Admissions Chair (Dr. Hong Qiao, [hqiao@austin.utexas.edu](mailto:hqiao@austin.utexas.edu))**

The Admissions Chair oversees the process of recruiting, evaluating, and admitting applicants to the PB graduate program.

### **PB Graduate Program Minority/Minoritized & LGBTQ+ Officers (Dr. Shalene Jha, [sjha@austin.utexas.edu](mailto:sjha@austin.utexas.edu))**

The Minority & LGBTQ+ Officer serve as liaison between the graduate students, the PB GSC, the Department of Integrative Biology, and the College of Natural Sciences.

### **PB GSC Faculty Members**

Faculty members on the PB Graduate Studies Committee can mentor PB graduate students, advise and vote on PB GSC policies, serve on the PB GSC sub-committees and dissertation committees. A list of current PB GSC members is at

<https://integrativebio.utexas.edu/component/cobalt/items/1-directory?Itemid=1453>

## **Assistant Director for IB (Theresa Kelly, [theresa.kelly@austin.utexas.edu](mailto:theresa.kelly@austin.utexas.edu))**

The Assistant Director for Integrative Biology assists the Department Chair and is the office administrator for Integrative Biology. If you need a signature from the IB Department Chair, you should contact the Assistant Director for IB.

---

### **Graduate Student Representatives**

---

PB students can serve as representatives for the program. The representatives can attend IB departmental meetings as well as PB program meetings. The positions are usually nominated and voted on amongst the graduate students every year at the beginning of the fall semester. Contact information for the current PB Graduate Student Representative, the CNS Dean's Graduate Student Council Representatives, and the Graduate Student Assembly Representatives are listed here:

<https://integrativebio.utexas.edu/plant-biology-graduate-program/current-students-plantbio/administrative-graduate-student-contacts>

---

### **Student Advising**

---

Each student in PB receives a personalized education, under the supervision of a team of faculty.

#### **Major Professor(s)**

Each PB student has a faculty member appointed as major professor (principal investigator, PI) before arriving at UT. The major professor, or professors if co-advised, is responsible for providing the student with academic guidance regarding coursework, research, and the access needed to facilities and resources to conduct research. A major professor must be on the PB GSC. If a student elects to be co-advised, the second co-advisor does not have to be an PB-GSC member and does not have to be affiliated with the university, although in the latter case the co-advisor must be approved by the PB Graduate Advisor and the Graduate School.

It is possible to add a co-advisor or to change major professor(s), if a student feels that additional expertise amongst advisors might be beneficial, or that another lab is better suited to serve the student's academic interests. This is not uncommon but can be a stressful decision in some cases. We advise you to consult with the PB Graduate Advisor in these situations. If any changes are made regarding major professor(s), as well as the Dissertation Committee, the student needs to notify the Graduate Program Administrator about the change as soon as possible.

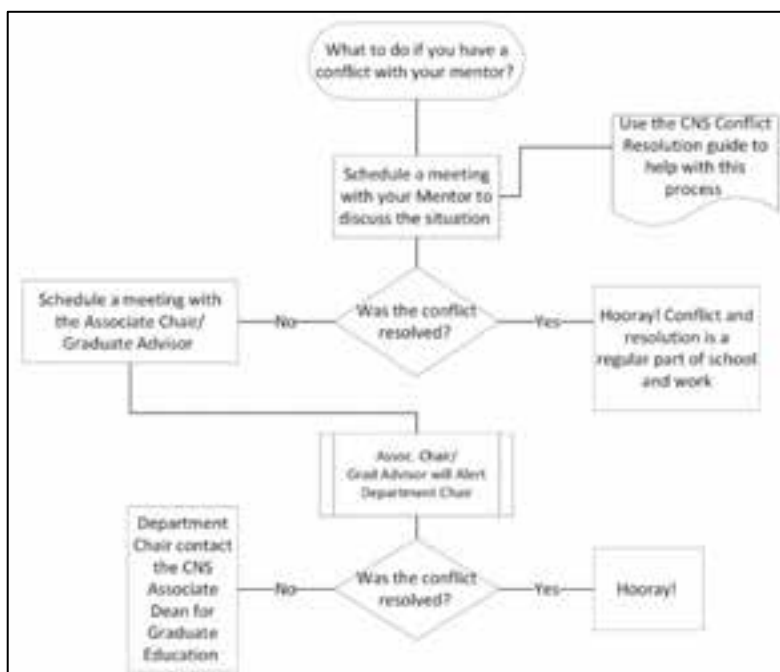
First year students may opt to intern in two or three labs during their first year with approval of the relevant faculty. These internships ("rotations") are not required but are available on an opt-in basis. Internships allow the student to learn a variety of research perspectives and methods, and to ensure that they settle in a lab that best suits their academic interests. Internships may be as simple as attending lab meetings, completing a reading project under the guidance of a professor, or may entail field or lab work. If you and a professor(s) decide on this option, you must notify the Graduate Advisor and Graduate Program Administrator immediately.

## Mentorship, Accessibility, and Well-Being

The Mentorship Committee of the Department of Integrative Biology assists in the support of prospective, incoming, and current graduate students through mentorship and community-building; and addresses concerns or complaints about isolation, bias, harassment, mentor-student conflict, or any other well-being related challenges. All graduate students are encouraged to speak with one or more of the Committee members, the GSC Chair, the Graduate Advisor, the Associate Chair for Graduate Education, or the Graduate Program Administrator about any concerns they may have. We will coordinate with students on how to proceed. We will hold all student concerns in confidence, except in Title IX incidents (sexual assault, stalking, sexual harassment, sex discrimination); Texas state law requires that everyone in the UT community is obligated to follow mandatory Title IX reporting to the University's Title IX Office (<https://titleix.utexas.edu/>). Further information, as well as a list of all current faculty, staff, and graduate student representatives serving on the Mentorship, Accessibility, and Well-Being Committee are listed at <https://integrativebio.utexas.edu/about/supporting-our-community..>

## Conflict Resolution

All students, faculty, researchers, and staff affiliated with the PB GSC are expected to contribute to a work environment of cooperation, respect, and trust. If any conflicts develop (e.g., student-faculty or student-student conflicts), graduate students are encouraged to speak confidentially about any concerns they may have with their Graduate Advisor(s), one or more of their graduate committee members, the PB GSC Chair, the Associate Chair for Graduate Education in Integrative Biology, or the Graduate Program Administrator. The flowchart to the right was adapted from a similar flowchart developed by the College of Natural Sciences to help navigate conflict-resolution procedures.



---

## Course Advisory and Mentoring Plans

---

### Mentoring Plan Part 1

During the fall semester of Year 1, each first-year student is required to complete Part 1 of a Mentoring Plan. Each first-year student develops this Plan in consultation with the student's Major Advisor, and the

Plan is then approved by the Graduate Advisor. The Graduate Administrator will provide the form for the Mentoring Plan Part 1 at the beginning of the first semester, and the completed Mentoring Plan Part 1 is due 1<sup>st</sup> October.

## Mentoring Plan Part 2

At the end of the spring semester of the first year of graduate studies, each first-year student is required to develop and complete Part 2 of their Mentoring Plan in consultation with the major professor and receive approval by the Graduate Advisor. The Graduate Administrator will provide the form for the Mentoring Plan Part 2 at the beginning of the second semester, and the completed Mentoring Plan Part 2 is due 1<sup>st</sup> February.

## Amended Mentoring Plans

A student will need to submit an amended Mentoring Plan and possibly a follow-up Mentoring Plan under the following two conditions:

- If a student decides to change the major advisor, it is a requirement for this student to develop a new mentoring plan with the new major advisor.
- If a student's research direction changes significantly, a student may benefit from a new mentoring plan, the student and/or the major professor can then request development of a new mentoring plan.

---

## Annual Student Self-Assessment

---

All PB students are expected to make reasonable progress toward completion of all degree requirements. Beginning with the student's second year, each student must meet with their major advisor(s) and complete a required Annual Student Self-Assessment of student accomplishments and progress towards completing degree requirements. It is the student's responsibility to set up this yearly meeting and complete the Annual Student Self-Assessment by November 1st each year. Once complete, the Self-Assessment must be routed through DocuSign for signature. [Note that the *Annual Student Self-Assessment* is different from the *Annual Committee Meeting Self-Report* that is discussed below. Both the *Self-Assessment* and the *Self-Report* are written by each student, but while the *Annual Student Self-Assessment* is written by a student to summarize the student's *own views* of accomplishments and progress towards completing degree requirements, the *Annual Committee Meeting Self-Report* summarizes the decisions and recommendations agreed upon during the annual meeting by the student's advisory Committee. Both the *Annual Student Self-Assessment* and the *Annual Committee Meeting Self-Report* are used by the PB Graduate Student Evaluation Committee in its annual review of graduate student progress, and when the PB Awards Committee awards merit fellowships, research and travel funds.] Flagrant or repeated violation of submitting the required Annual Student Self-Assessment in time may affect a student's eligibility for TA or GRA appointments or for fellowship support.

The form for the Annual Student Self-Assessment is available at <https://integrativebio.utexas.edu/plant-biology-graduate-program/current-students-plantbio/forms>

---

## Ph.D. Curriculum Requirements

---

The Graduate School requires 30 credit-hours of graduate-level coursework to complete a Ph.D. This includes classes, seminar courses, research and dissertation hours. The Graduate School policy is that students must receive a minimum grade of B- or higher to receive credit towards fulfilling degree requirements. PB's policy is that students are required to fulfill the following coursework. This is the minimum required coursework required by Plant Biology. However, depending on your research and previous experience, your committee may decide you need to take additional courses.

### BIO 389D – Subjects & Skills in Biological Sciences

This core course is required for all PB graduate students during the fall semester of the student's first year. First-year PB graduate students attend this course together with the first-year graduate students from the EEB graduate program.

### Three Additional Lecture Courses

PB students must take a minimum of three additional graduate-level lecture courses. Lecture courses are defined as courses that meet a minimum of two hours per week, including some instructor-led content (e.g., not just student-led reading discussion), and involve both reading and graded assignments leading to a letter grade.

Two of the additional PB courses must be in the student's area of study and one must be outside the student's area of study. Typically, this is defined as organismal students will take two plant organismal courses and one molecular course, while molecular students will take two plant molecular courses and one organismal course.

### Course Offerings

Some of the graduate courses listed below will be offered every year, while some will be offered at least every few years, as faculty are available.

IB Courses		
BIO 389D	Subjects & Skills in Biological Sciences	Mueller, Jha
BIO 384L	Issues in Population Biology / Topics & Skills in Biological Sciences (spring only)	Wolf, Farrior
Bio 380C	Advanced Conservation Biology	Fowler
BIO 384K	Theoretical Ecology	Farrior
BIO 384K	Ecology Seminar	Wolf



BIO 389D	Fundamentals of Ecology	Jha, Keitt
BIO 384	Fundamentals of Molecular Evolution	Moran, Ochman
BIO 386K-3	Advances in Plant Systematics	Jansen
Bio 390C	Fundamentals of Evolution	Juenger, Matz, Linder, Kirkpatrick
BIO384	Molecular ecology	Havird
BIO384K	Mitonuclear ecology	Havird
BIO 382K	Python Programming for Biologists	Linder
BIO 384K	Meta-analysis	Havird

MBS Courses		
BIO 389	Advanced Plant Physiology	Clark
BIO 388E	Plant Growth and Development	
BIO 388M	Plant Molecular Biology	Mehdy
BIO 395	Plant Biology: Lab Studies in Plant Biology	

### Advanced Study and Research / Dissertation Hours

Students who have not yet advanced to candidacy should take BIO 182, 282, 382, 682 or 982 (Advanced Study and Research) as part of their course load. This provides credit in recognition of ongoing preparation to do research, but does not fulfill the lecture or seminar course requirements listed above. After admission to candidacy, students should register for BIO 399W, 699W, or 999W each semester. In all cases, the first digit 3, 6, or 9 is the number of credit hours. Nine credit hours in the long semesters and 3 credits in the summer are required for full time status. If this becomes an issue, please contact the Graduate Coordinator.

### Summary of Curriculum Requirements

Required Courses	Number of Semesters	When to Take
Subjects & Skills in Biology	1	Fall of first year
Two PB graduate level courses in your area of study	2	Preferred before candidacy
One PB graduate level course outside your area of study	1	Preferred before candidacy

Research credit (BIO 382, 682,982)	At least 1	Every semester until admission to candidacy.
Dissertation credit (BIO 399W, 699W, 999W)	At least 2	Every semester after admission to candidacy.

### Summary Timeline of Milestones

Time	Requirement
Year 1, fall	Complete <b>Mentoring Plan Part 1, due October 1<sup>st</sup> of year 1</b>
Year 1, spring	Complete <b>Mentoring Plan Part 2, due February 1<sup>st</sup> of year 1.</b>
Year 2, fall	Form <b>Dissertation Committee</b> before end of the semester
Starting with Year 2, by Nov 1 <sup>st</sup>	Complete <b>Annual Student Self-Assessment</b> form, due each year by Nov 1 <sup>st</sup>
Years 1 and 2	Take formal coursework towards the Ph.D.
Year 2	Complete <b>Qualifying Exam</b> before end of the summer (can petition to take Qualifying Exam in Year 3).
Post-Candidacy, by Nov 1 <sup>st</sup> each year	<b>Annual Committee Meeting Self-Report</b> , each student summarizes in a report the Committee's recommendation after the annual Committee meeting, has this report approved by <i>each</i> Committee member, then files the fully approved report with the Graduate Program Administrator (see below)
Year 5	<b>Thesis Defense</b> , can petition for extension; celebrate Ph.D.!

### Course work completed during Master's studies prior to PB graduate studies

For those coming into the graduate program with a master's degree, you are still required to take the required minimum four courses. Depending on your research interests, your committee may still require additional course work.

---

### Qualifying Exam & Dissertation Proposal

---

In consultation with the Major Professor and approval by the Graduate Advisor, the student will choose a Dissertation Committee that will administer the Qualifying Exam. The committee must be chosen during the fall semester of the second year. The student and Major Professor(s) propose a list of five faculty to serve on the committee, which will be approved by the Graduate Advisor. The student's PI is one of the 5 members of the committee. At least three committee members must be PB GSC faculty members. One of PB GSC members must be outside the area of the student's specialization, such as, a student with a molecular or physiological interest would have one organismal faculty member on the committee. At least one member of the Dissertation Committee must be from outside the PB GSC. The outside committee member can serve on the PB GSC, but the person considered "outside" must be affiliated with another GSC. If the outside committee member is from another university or is not an official GSC member

with the Graduate School, they will be required to submit a CV. One Senior Lecturer can serve on the Qualifying committee with the approval of the Graduate Advisor.

A student who wishes to schedule a Qualifying Exam must complete the Qualifying Exam application and prepare the Program of Work for Doctoral Degree. Both of these forms are available at <https://integrativebio.utexas.edu/plant-biology-graduate-program/current-students-plantbio/forms>.

The Program of Work includes an approximate thesis title (in order to give the GSC an indication of the student's interests), but a research abstract is not required at this time. A draft of the Program of Work should be approved by the Graduate Advisor at least two weeks before the Qualifying Exam is scheduled to occur. The draft will then be distributed by the Graduate Coordinator to the entire GSC for comments and recommendations.

The Qualifying Exam Committee described above will administer the exam. A person on the exam committee will serve as the chair of the Qualifying Exam Committee, but that person cannot be the student's PI(s).

## Purpose

The purpose of Qualifying Exam is to assess whether students have the intellectual capacity, maturity, and background knowledge to conduct research. Specifically, the exam is supposed to:

- evaluate student ability to identify and justify interesting research questions, including formulating appropriate hypotheses,
- assess student ability to place research questions into context of current literature,
- assess student ability to plan strategies to answer research questions,
- evaluate the student's ability to communicate their questions and knowledge in written and oral form,
- identify gaps in student knowledge relevant to their general discipline and to recommend rectification, and
- provide an incentive for student to hone skills and knowledge necessary to proceed with research in their discipline. Assessment of more general subject-matter knowledge is achieved by grades from courses.

## Prerequisites

Prior to taking the Qualifying Exam, students should have completed, or at least be currently enrolled, in four courses as required by the program. If a course isn't offered in time to take it before or during the semester of your qualifying exam, and the committee and the Graduate Advisor approve, the student may still go ahead and take the Qualifying Exam.

## Scheduling

It is the student's responsibility to set up a date, place and time for the exam when all the committee members can meet. You should schedule a two-hour time slot, however, if you would

like extra time to set up, be sure to allow additional time when reserving the room.

The oral exam should take place by the end of the student's second year (fourth long semester or the subsequent summer). Students seeking to take their exam in their third year must petition the Graduate Advisor to approve the delay. Students who have not completed the Qualifying Exam before the end of their sixth long semester risk being re-routed by their committee or the GSC to the Master's degree track.

### **Qualifying Exam Procedure**

At least two weeks before the exam, the dissertation proposal must be sent to the PI for approval. Once approved and at least one week before the exam, the student must email a copy of the proposal to each of their committee members. It is a good idea to remind each committee member the day before or the morning of the exam about the location and time of the exam.

The single oral exam will focus on the proposal focus on the student's development of questions, hypotheses, and experiments. The exam is also an opportunity for the student to get feedback from their committee. The proposal must include an abstract, introduction, questions and/or hypotheses, explanation of significance, proposed methodology, feasibility and potential pitfalls, and a brief literature review. Three or more chapters should be planned. It is the responsibility of the examining committee to ensure that the student has a sound understanding of all aspects of plant biology, that are central to their proposed work (aka General Knowledge, see below).

All voting members of the committee will have the opportunity to ask questions on any topic they deem relevant to the student's research, including General Knowledge questions, until satisfied that the student has sufficient knowledge to conduct the research and interpret it in the contemporary light of the discipline area.

At the end of the exam, with the student out of the room, the faculty consult about a decision. With feedback from the mentor, the committee may choose among the following decisions:

#### **General Knowledge relevant to research goals**

1. Pass without conditions.
2. Pass without conditions (e.g., more coursework, a brief monograph of a taxon or concept or discipline to be reviewed by committee).

#### **Dissertation Proposal**

1. Pass without conditions.
2. Pass with conditions (e.g., relatively minor refinement of one or more sections of proposal).
3. Major restructuring of Proposal with re-examination at a later date.
4. In extreme cases: Fail, and termination of the PhD program.

**When results of both sections of the Qualifying Exam are "Pass without conditions", the overall recommendation shall be to Advance to Candidacy.**

The Qualifying Examination Results form must be signed by all committee members. This form is completed through DocuSign and this process must be initiated by the graduate student. The student should go to [Forms \(utexas.edu\)](https://forms.utexas.edu) and then to Qualifying Exam Results, which links to the relevant DocuSign portal. Once initiated by the student the forms will be forwarded to the committee members for their signatures. If any additional coursework is required, it should be added to the student's Program of Work for the Doctoral Degree.

---

### Advance to Candidacy

---

When the dissertation proposal has been accepted by the committee and the results form has been signed by the student's committee, the student must return the form to the Graduate Coordinator. The GC will send the student the online form to apply for candidacy with the Graduate School. You are not officially in candidacy until the online form has been final approved by the Graduate School.

Students should also check with the Graduate Coordinator during this time to be sure all your degree requirements have been met. Students do not want to get to their defense to realize something was missed.

---

### Dissertation Defense

---

The semester the student intends to graduate a Graduate Application must be submitted online with the Graduate School. <https://gradschool.utexas.edu/academics/theses-and-dissertations/doctoral-candidacy> This application is due fairly early in the semester, so if you think you may defend, go ahead and submit the application. If by chance you don't defend, or you are still making corrections when the deadline passes, you will just need to apply to graduate again the following semester. It is free to apply to graduate; you can apply multiple times, if necessary.

The students meet with their Dissertation Committee on an annual basis once admitted to candidacy. Critically, they meet within one year prior to the Dissertation Defense to review progress towards completion and get approval of an approximate date for the exam. The appropriate form is at <https://www.docuSign.net/Member/PowerFormSigning.aspx?PowerFormId=31b0f2d9-8650-4631-a176-d0028b0b231c&env=na1&acct=d40a37d5-d708-44dd-9ea7-aab378b81326&v=2>)

When the dissertation is essentially in its final form, it is circulated to the Dissertation Committee. When all members of the committee agree, the final oral exam should be scheduled with the Graduate School by completing the Request for Final Oral Exam form. You can access the form on our PB webpage at the same "Forms" link that is given above. At this point, all

deadlines and paperwork are with the Graduate School, not the PB Graduate Program.

Following procedures specified by the Graduate School, the student should give copies of the dissertation to all committee members at least four weeks prior to the defense.

The Request for Final Oral Examination must be signed by all members of the committee and the Graduate Advisor, then submitted to the Graduate School at least two weeks prior to the exam. This is all done through DocuSign. No committee member is expected to sign the Request for Final Oral Examination until they have had sufficient time to examine the dissertation.

The oral defense consists of two parts. The first is a public seminar that is open to members of the University and the public at large. Immediately following the seminar, the student meets privately with the Dissertation Committee to answer any questions that the committee members may have. Once all corrections have been made to the dissertation and at least four members of the committee approve, the GSC Chair or PI (GSC Chair representative), may sign the Report of Dissertation Committee form to notify the Graduate School Dean of successful completion of the defense and all degree requirements. As with other procedures. This form can be accessed on the “Forms” page of the PB website and must be initiated by the graduate student.

---

### Master of Arts Program

---

The Graduate School has two programs leading to a Master of Arts (MA) Degree that are applicable to Plant Biology and is expected to be completed within two to three years.

- MA with Thesis. This is the usual degree taken in this program. Six hours of “Thesis” are taken as part of the 30 hours of coursework. A written thesis is presented and read by two members of the faculty, your advisor and one other member.
- MA with Report. Three hours of “Report” are taken as part of the 30 hours of coursework. A report instead of a thesis is written. This report is based on work done in one of the courses. The report is read and signed by two members of the faculty, your advisor and one other member.

### Course Requirements for completion of a Master of Arts

- For the Thesis option, 24 hours of coursework, plus BIO 698A & 698B Thesis (taken sequentially) which counts for 6 hours for a total of 30 hours. For a MA with Report option, BIO 398R must be taken and counts for 3 hours, in addition to 27 hours of coursework, for a total of 30 hours.
- A minimum of 15 hours of coursework in PB is required. PB courses are defined as courses taught or co-taught by a member of the Plant Biology GSC. In rare cases, a

course taught by a faculty member who is not a member of the PB GSC may be acceptable but must be approved by the Graduate Advisor. Research courses (BIO 182, 282, 382, etc.) cannot be used to fill this requirement. The student can use no more than one conference course to fulfill the 15-hour requirement.

- As part of the 15 hours of coursework, the student must take three hours of BIO 389D Subjects & Skills in Biological Sciences. This is a core course for first- semester students in the Plant Biology graduate program and is co-taught with the EEB first year students.
- An additional six hours of work acceptable for graduate credit must be outside the major area of Plant Biology.
- No more than 9 hours of senior level college courses may be counted toward the MA degree, and no more than 6 of these can be in PB or the minor area. Courses with a middle digit of 8 or 9 should be chosen where possible.
- No more than six hours of Credit/No Credit courses can be counted. Approval of the Graduate Advisor is required prior to registration for a Credit/No Credit course.

### **Program of Work, Master of Arts**

The semester the student intends to graduate, an online graduate application and Program of Work must be submitted. You should contact the Graduate Coordinator to submit the Program of Work online. Once complete, you may then submit the graduation application.

### **Thesis Defense, Master of Arts**

Your thesis must be read by your Supervising Professor and one other faculty member. The Reader does not have to be on the PB GSC, nor do they have to be a faculty member, but they must have the PhD credentials to evaluate your Thesis properly.

---

## **Registration**

---

Students must be enrolled in classes whenever they are receiving services from UT- Austin, such as course instruction, faculty interaction, employment, fellowship or training grant stipends. Please read the following section carefully and check with the Graduate Program Administrator if you have any questions.

### **Full-Time Registration**

In most cases, all PB students must be enrolled full-time during the fall and spring semesters. Because the PB program guarantees support for the first five years, students must be registered full-time, which is 9-hours in the long semester and 3-hours in summer. In some cases, students do not have to be registered in the summer. For these few exceptions, the Graduate Program Administrator will inform students beforehand if this is an option. Students need to register in time, to avoid registering late and incurring a late fee.

The University will not pay more than the full-time cost for registration. If you have more than 9 hours in the long semester, or 3 hours in the summer, contact your Graduate Program Administrator for advice in meeting the desired 9 credit hours (long semesters) and 3 credit hours (summer) goal.

### **Tuition Waiver**

Employment as a teaching assistant (TA) or Graduate Research Assistant (GRA) qualifies non-Texas residents to receive resident tuition. The waiver has to be requested online and is applied directly to a student's fee bill. Each student needs to apply for a Tuition Waiver every semester when appointed as a TA or GRA.

For students who are supported by a fellowship, please DO NOT fill out the online Tuition Waiver. The Graduate Program Administrator will take care of submitting the forms for your Waiver, as those are processed differently for fellowship recipients. Please contact the Graduate Program Administrator if you are not sure which type of tuition waiver you need.

### **Tuition Bill**

Between the University, CNS and the Department, tuition is covered in full for the first 5-years. Payments usually happen in stages, as different accounts and departments cover different parts of the tuition bill. If you owe additional fees that are not covered under the regular tuition and required fees, then you will need to pay the remaining balance once the University has applied all other payments. These fees include the \$10 General Deposit for first-year students. Because students can request reimbursement for this fee after graduation, the University cannot cover it. Other examples of additional fees are sports packages (for use of sports facilities at UT that a student opts into) and possible late fees incurred by a student.

### **Confirming Registration**

All students must confirm their tuition bill after all payments are applied or registration will be cancelled. To confirm your registration, go to the tuition payment website and click the "CONFIRM" button. The Graduate Program Administrator will send you a notice when it is time to confirm, but if you happen to log on and read the prompt to "confirm", please go ahead and confirm. If your tuition bill is NOT confirmed by the 5:00 pm deadline, then your registration will be cancelled, and you will be charged a late fee when you re-register. In this case, the student is responsible for covering any late fees accrued.

### **Continuous Registration**

The Graduate School requires all students to be continuously enrolled for at least 3 hours for all long semesters (Spring and Fall) until completion of the degree. Students must petition the Graduate School if they intend to take a medical leave of absence during a long semester. The Graduate Program Administrator will be able to help you with the petition.

### **Add/Drop or Credit/No Credit**

Students may add and drop courses without penalty during the add/drop period, which ends on the 12<sup>th</sup> class day during long semesters and on the 4<sup>th</sup> class day in summer. After that date, students must petition the Graduate School for late add/drop, but such petitions are rarely approved. If a student must drop a course after the deadline and the petition is approved, the student will have to pay to add another course to maintain full-time status required for TA/GRA support or fellowship support. The cost to add a course is about the same cost as summer registration.

A student may change the grade status to CR/NC until about half-way through a long semester. Courses required in the Program of Work cannot be taken CR/NC.



---

## Outside Employment

---

### Additional Employment and Outside Employment

IB graduate students are not allowed to have outside employment (e.g., part-time positions in restaurants) or any type of job that interferes with the completion of coursework or research. On occasion, students may have 5-10 hours of additional University-related employment if the employment is related to their role as graduate students, such as paid grader positions for courses taught at the University, but such employment is possible only after the completion of the first year. International students are not eligible for additional employment beyond their current 20 hour/week GRA or TA appointment. Before accepting any additional employment, students should first consult with their supervising professor and inform the Graduate Program Administrator. Students are required to disclose all outside activity that may result in a Conflict-of-Interest with student appointment at UT-Austin. Information about Outside Employment and Conflict-of-Interests can be found on the UT Human Resources website at <https://hr.utexas.edu/current/compliance/outside-employment>

---

## Academic Appointments and University Fellowships

---

The primary means of support from the University is through an academic appointment, such as Teaching Assistantships (TAs), Graduate Research Assistantships (GRAs), or various University fellowships. A student appointed as a 20-hour TA or GRA, or on a fellowship of at least a \$1000, qualifies for resident tuition rates.

### Teaching Assistantships

Prior to holding a Teaching Assistant (TA) position, the student must take a short training workshop offered prior to the start of their first semester during which a student serves as TA. The workshop is typically held the Friday during the week before classes start.

Students are considered for available TA positions by the request of each student. Students who serve as TA in one semester must reapply for the next long semester. Once a student accepts a TA position offered by The Biology Instructional Office (once the student signs the contract with that Office), a student is obligated to serve for that teaching position (a student is not allowed to cancel the appointment ad hoc). A student is not allowed to opt out of a TA commitment without finding someone else who is qualified to serve as TA as a replacement. Students should never anticipate they can cancel their TA appointment and automatically find a replacement.

### Graduate Research Assistantships

Many faculty members have research grants that allow them to appoint students as Graduate Research Assistants (GRAs). Students should check with their Major Advisor(s) concerning availability of such appointments before submitting a TA request. Once a student accepts to serve as a TA in a particular semester and signs the contract with the Biology Instructional Office, a student is not allowed to switch to GRA support if such support becomes available (e.g., if Major Advisor is awarded new research funds).

## Pay Period for Teaching Assistants and Graduate Research Assistants

TA's and GRA's are paid in arrears, so September's paycheck will pay out on 1<sup>st</sup> October. Appointments are processed by semesters, which are broken down as:

- September 1 – January 15 (fall semester)
- January 16 – May 31 (spring semester)
- June 1 – August 31 (summer)

## Appointment as Grader

Each semester, a few grader appointments are available through the Biology Instructional Office. These appointments are made at the beginning of each semester, and all students have an opportunity to request a grader appointment in addition to TA or GRA support, as long as the student does not exceed the appointment limit. The maximum number of hours allowed for TA/GRA appointments is 30 hours. The two exceptions to this rule are:

- 1) First year students can only be appointed for a maximum of 20 hours per semester.
- 2) International students can only be appointed for a maximum of 20 hours per semester.

## University Fellowships

Each year the Graduate School accepts nominations from each Graduate Program for UT Continuing Fellowships, which provide a year-long stipend. To qualify, you must be in candidacy, or have passed the Qualifying Exam and be in the process of applying to candidacy. The PB Graduate Student Evaluation and Fellowship Committee determines whose name(s) will be submitted to the Graduate School for consideration of a Continuing Fellowship. Nominees for these awards are selected by the Committee based on the strength of their application and on their records of performance. The Graduate School makes the final selection of the Fellows; these are highly competitive fellowships.

## Pay Period for Fellowships

Fellowships paid by the Graduate School are paid in advance (i.e., a student receiving a fellowship is paid September 1 for the month of September). These fellowships include some Recruitment Fellowships, Continuing Fellowships, NSF-GRFP support, and any other type of fellowship paid through the Graduate School. Be sure to budget for the *last* month you are supported by one of these fellowships. Also, when your fellowship ends in August, you will receive your August check on August 1, but you will not receive your TA/GRA, or some fellowships from outside sources for September until October 1, so please budget for this extra month accordingly. There is a similar situation for those who serve as a TA or GRA in the spring semester and then are supported by a fellowship for only the summer; in such a case, you will receive two stipends on June 1, so hold funds from one of those checks until September 1.

- June 1 – receive Grad School fellowship for June
- June 1 – receive TA/GRA and some fellowships for May
- August 1 – receive Grad School fellowship for August
- October 1 – receive stipend for the month of September, leaving a two-month gap

---

## Fellowships

---

Students with strong accomplishments in research and broader impacts should apply for federally funded

fellowships, such as the NSF GRFP, NRSA fellowships from NIH, Howard Hughes Medical Institute International Student Pre-Doctoral Fellowship. We encourage all students to apply to such outside fellowships or international fellowships, and the required course BIO 389D Research Skills in Biological Sciences (required for all incoming graduate students in PB) focuses on development and writing of effective fellowship and research-grant proposals. The most important internal, external, and international fellowships available are listed here: <https://gradschool.utexas.edu/finances/fellowships>

For those with prestigious fellowships, or looking to apply for a fellowship outside UT where the stipend is not as high as the typical stipend paid to PB students, or the health insurance and/or tuition is not fully covered, please let the Graduate Program Administrator know as soon as possible, and payment of full stipend, health insurance, and tuition will be determined on a case-by-case basis with the Major Advisor.

## Graduate School Fellowships & Fellowship Supplements

Each fall and spring semester the Graduate School and CNS hold competitions for various kinds of fellowships: <https://gradschool.utexas.edu/finances/fellowships/graduate-school>. Some of these fellowships require nomination by the PB Graduate Program or by PB faculty, and the Graduate School will notify eligible students by email in advance of application deadlines about these fellowship possibilities.

In contrast to a Graduate School Fellowship, a Fellowship Supplement is a one-time stipend of \$1000 distributed around September 1<sup>st</sup>. With this supplement a student may qualify for in-state tuition rates for fall, spring and summer of that academic year. The student may apply for this fellowship each year they hold a qualifying fellowship. Please write to the Graduate Program Administrator about Fellowship Supplements available through the PB program.

---

## Department Fellowship Competition

---

Every fall and spring semester, the IB-Department provides funds that are allocated competitively to IB-affiliated graduate students to help them achieve their career goals. Students can apply for up to \$12,000 during their time as a graduate student, for example to cover purchase of supplies, research-related travel, or workshop fees. Please note that these funds are not guaranteed but awarded by the discretion of the IB Awards Committee. Once funding is awarded to a student, the student has about 6 months to claim these funds, otherwise the funds are forfeited, and the student must reapply during another competition. If the student does not claim all awarded funds, the funds will remain available to them to apply for in future competitions. The deadlines to claim awarded funds are October 1 and March 1 of each year.

Please note, all funds for research and travel awards are taxed (see below), as the funds are paid from endowments directly to a student, and these payments are considered student income.

## Research and Travel Awards

Each PB student may apply for up to \$2500 research or travel funds each fall and spring semester to be used anytime through February for the research-award competition in fall, and through September for the research-award competition in spring. Once an award has been made, the student will receive a letter from the Graduate Program Administrator stating the funds are awarded. The student and Major Advisor must then sign the form attached to the award letter certifying that the funds will be used for the intended purpose. Only after the Graduate Program Administrator receives this signed form will the fellowship funds be processed. Once funds are spent, the student awardee must email to the Graduate Program Administrator a single PDF document that includes (a) a budget table summarizing all expenses incurred (including the sum total), signed by the student and Major Advisor to confirm these expenses; and (b) e-

copies of all receipts of the expenses listed in that budget table (all receipts have to be included in the single PDF rather than be sent separately). It is a student's responsibility to save all receipts, and document all expenditures listed in the budget table. If a student does not submit this budget table and corresponding receipts, no other funds will be distributed in future award competitions until received.

Funds for research are to be used for research expenditures such as equipment, supplies, microscopy time, DNA sequencing, travel to research field sites, or research-related workshops or training. Research awards cannot be used to cover salaries for undergraduate assistants. If purchases of supplies are made through UT Market, then those purchases will be charged a 5% fee to be reimbursed back to the University in an account for your use. If supplies are purchased through UT Market, then the purchase becomes property of the University. If you purchase outright yourself (i.e., not through UT Market), then the property is yours, since it is being purchased by a fellowship.

Like the research awards, travel awards are capped at a maximum of \$2,500 per application. Travel awards are for students who (a) will present an oral talk or poster at a professional meeting, and (b) are approaching the end of their graduate career and thus need the opportunity to line up postdoctoral fellowships or other job opportunities. Cost-matching by the Major Advisor(s) is encouraged. A student may apply for several travel awards during the time as an PB graduate student, but the total amount in funds received (travel awards *plus* research awards combined) cannot exceed the maximum of \$12,000 of total funds potentially available for each student (see above).

Students who are near their thesis defense and who wish to self-support during their last semester may apply for a \$1000 fellowship, which then gives them in-state tuition rates. The Major Advisor needs to provide a letter in support of this arrangement, and the \$1000 fellowship must be used to help off-set the cost of tuition. This fellowship is available only to those students who still have unexpended funds available of the maximum of \$12,000.

### **Fellowship Payments are Taxed**

Because UT policy prohibits us from establishing a UT account with endowment funds, research and travel awards are paid directly to the student and therefore are considered taxable income. Payment for services within the University (e.g., DNA sequencing, microscopy time), must be paid from a departmental account, which the student then will need to reimburse from the Research Award. In most cases, the departmental account to be reimbursed will be Integrative Biology (IB) or Molecular Biosciences (MBS). We suggest that awardees create a separate personal bank account for fellowship money to avoid co-mingling personal funds and research-award funds and to facilitate auditing if that were to become necessary.

---

### **Health Insurance Benefits**

---

All Graduate Research Assistants (GRAs), Teaching Assistants (TAs), and full Graduate Fellowship recipients are covered by an AcademicBlue<sup>SM</sup> Student Health Plan through Blue Cross Blue Shield (BCBS) of Texas and through Student Health Services:

<https://utaustin.myahpcare.com/>. A student will be automatically enrolled in this Student Health Plan each semester when a student has an academic student employee appointment through Workday. If supported by a Fellowship during a given semester, a student must enroll personally (click *Begin Enrollment* at <https://utaustin.myahpcare.com/>).

The student health insurance offered by the University of Texas at Austin is considered a gold plan under the Affordable Care Act.

---

## Required Student Training

---

The University of Texas at Austin requires all graduate students to take several trainings at the beginning of graduate studies. Some trainings have to be completed only once (e.g., training in the use of a fire extinguisher), but some are required every 2-3 years (e.g., Compliance Training, Responsible Conduct of Research, Laboratory Safety). Students will receive an email notification before the training is due.

The Graduate Program requires the below on-line training to be taken by all graduate students. This is not a complete list. Depending on your research (e.g., research on vertebrate animals or recombinant DNA), you may be required to take additional short training courses. You can find the link to online safety training under the Current Student tab at <https://integrativebio.utexas.edu/plant-biology-graduate-program/current-students-plantbio/safety-training>.

### Ethics and Compliance Training

Ethical conduct and compliance are personal responsibilities, and each student will be held accountable for own conduct and own decision making. The PB Graduate Program has a **zero-tolerance policy regarding academic dishonesty**, and students found to be participating in any form of academic dishonesty will face immediate dismissal from the program. Academic dishonesty includes, but is not limited to, cheating, plagiarism, collusion, and falsification of data or records.

If a graduate students hold a position as a TA, GRA, or another position on any University campus or property, the State of Texas expects these students to uphold certain ethical behaviors. Graduate students must be aware of, and be in compliance with, State law and University policies related to sexual harassment, equal opportunity, human research, recombinant DNA, integrity, IT security, and other such policies. Online training regarding relevant laws, protocols, procedures, and resources is therefore required by the University. The specific training courses assigned to a student can be accessed through the UT Austin's employee training management system (UTLearn) at <https://utlearn.utexas.edu/> (you need to login at link to UTLearn). Additional training courses are also available through UTLearn. Each student will receive annual email notifications for required training modules that have to be completed by a deadline at UTLearn.

### Teaching Assistant Workshop

The Biology Instructional Office requires completion of a teaching assistant workshop prior to serving as a TA. The workshop is given typically on a Friday during the week before classes start each fall and spring semester.

### Lab Safety Training

The university requires all laboratory personnel to have the following safety training courses. All courses except OH 205 are online at <https://utlearn.utexas.edu/>.

- OH 101 Hazard Communication – general
- OH 201 Laboratory Safety
- OH 202 Hazardous Waste Management
- OH 238 Laboratory Safety Refresher (required every 3 years after Lab Safety)

You may be notified to take other training by your lab or other university entities. When you receive such notifications, you must complete the training as soon as possible, but no later than the due date.

---

## Crisis Procedures

---

The PB Graduate Program strives to provide a highly supportive environment to aid students through difficulties in the event of crises such as assault, health problems (including mental health problems) or professional conflict (e.g., with the Major Advisor, or with other students or postdocs). Students in need of advice or help may contact any member of the faculty or staff with whom they feel comfortable, but may also contact the Graduate Advisor, the GSC Chair, the Associate Chair for Graduate Education in Integrative Biology, your Major Advisor, the Graduate Program Administrator, [the IB Community](#), [Accessibility and Well-Being \(CAW\)](#), or the Minority & LGBTQ+ Liaison Officers (see above). Such discussions will be held in complete confidence and nothing will be disclosed unless the student specifically requests disclosure, within the Title IX constraints that all UT employees are mandatory reporters (see above).

In the event of an urgent issue, students in need of assistance (especially those at risk to themselves) can use the contact list below to call for help immediately.

- Call 911 if you are hurt or in danger
- 24/7 UT Counseling and Mental Health Center Crisis Hot Line, 512-471-2255
- UT Counseling & Mental Health Center, Monday to Friday 8am-5pm, 512-471-3515
- Student Emergency Services, Monday to Friday 8 am-4 pm, 512-471-5017
- University Ombud's Office, Student Ombud's, 512-471-3825

For further information, please visit the PB website under the Current Student tab.

Mental Health Resources (use Current Student tab)

<https://integrativebio.utexas.edu/plant-biology-graduate-program/current-students-plantbio/mental-health-resources>

Campus Safety (use Current Student tab)

<https://integrativebio.utexas.edu/plant-biology-graduate-program/current-students-plantbio/campus-safety>

Covid vaccinations

[https://healthyhorns.utexas.edu/coronavirus\\_vaccination.html](https://healthyhorns.utexas.edu/coronavirus_vaccination.html)

---

## Scholastic Probation and Dismissal

---

Every graduate student must make satisfactory progress toward their degree or risk scholastic probation or dismissal from the program. Satisfactory progress includes research progress, completion of coursework, and good performance in TA/GRA duties.

- To stay in good academic standing the student must have an overall GPA at or above 3.0.
- To stay in good standing with a GRA appointment the student must be making satisfactory progress in the project that is supporting the GRA.
- To stay in good standing (with or without GRA support) the student must be making satisfactory progress in thesis or dissertation research. Satisfactory research progress will be determined by discussions between the student, the advisors, the student's committee, and the Graduate Program Advisor, including during the annual review process each year.
- To stay in good standing with a TA appointment the student must perform their duties as a TA satisfactorily in the classroom, lab and/or discussion sections, office hours, grading, and/or other TA duties. Satisfactory performance is determined by the instructor(s) of the course(s) and the Director of the Biology Instructional Office. Complaints will be communicated to the student as soon as possible following the report of poor performance.
- If the student's GPA falls below 3.0, the student will be given a full semester's notice to bring their GPA above 3.0.
- If the student is not making satisfactory progress in research or teaching, they will be notified of this by the GSC chair, and given explicit guidance on pathways to correct any deficiencies in performance. Students will have the opportunity to correct the inadequacies in their research progress or classroom during the following full semester.
- Failure to perform satisfactorily as a TA or GRA will likely result in the loss of further financial support of that type.
- Satisfactory performance also includes ongoing student engagement and communication with academic advisors, program advisors, or members of the GSC. Students should be pro-active in communicating any challenges that might be delaying progress in PhD and/or the need for accommodations for those challenges.

In the event that a student is not making satisfactory progress in the areas listed above, and does not correct the deficiencies within the semester assigned for improvement, the GSC, upon consultation with the academic advisor and graduate program advisor can begin the process of formal request for dismissal with the graduate school. The Graduate Program will follow all timelines and procedures outlined by the graduate school for dismissal, including formal reporting, student grievances, and formal adjudication procedures.